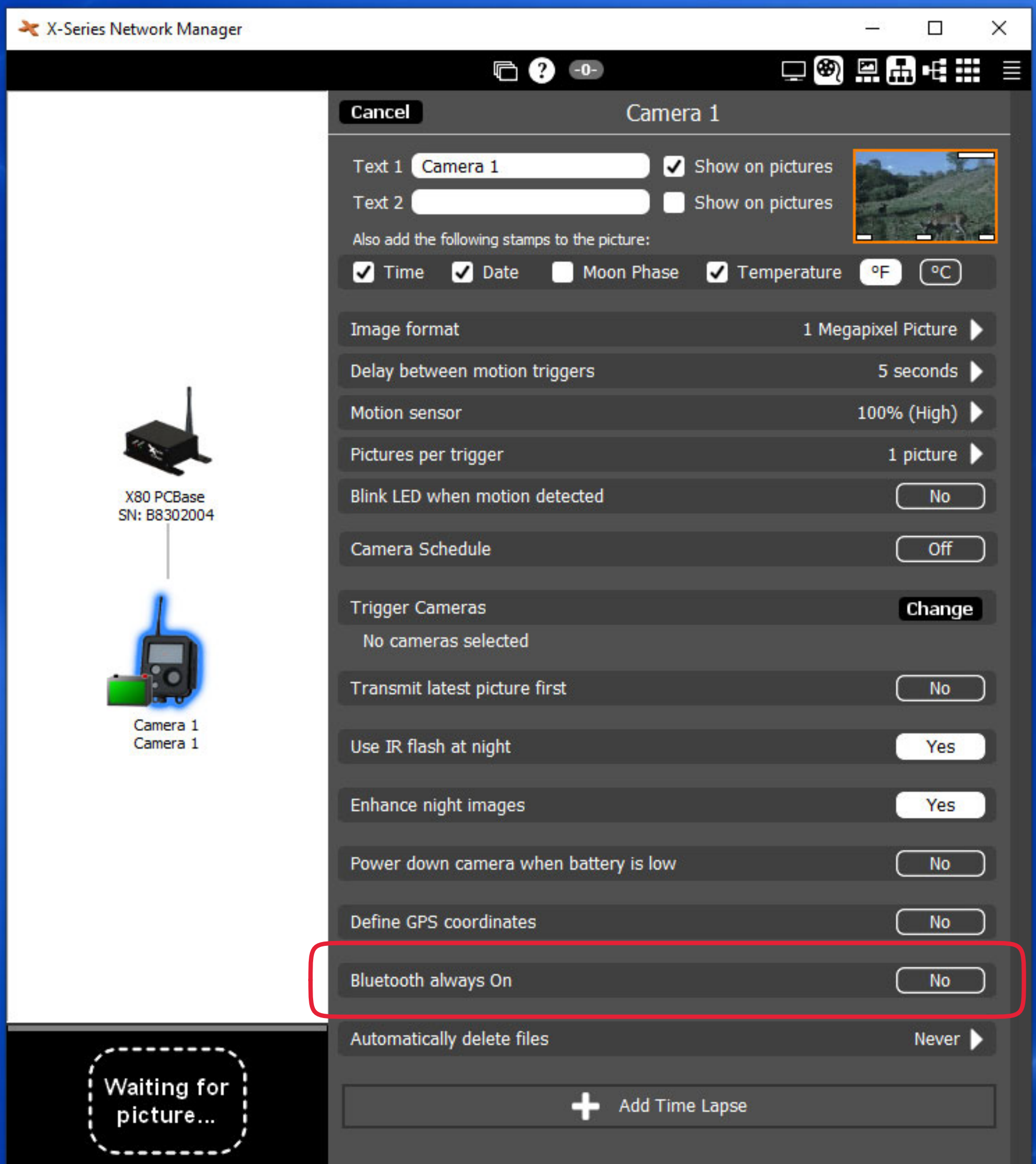




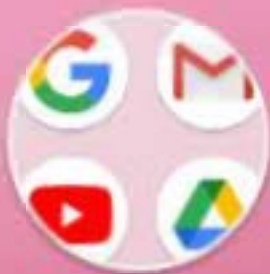
- If Bluetooth is not connect within the first 5 minutes of power up, Bluetooth will automatically shut off completely
- The default state of Bluetooth is off
- Bluetooth can be password protected for a secure connection (at Software)
- How to turn Bluetooth on:
 - Power cycle device and connect within 5 Minutes
 - Turn Bluetooth on from the software
- Never leave Bluetooth setting "on" when you do not plan on using Bluetooth
 - This will shorten the battery life per charge



Select the X Series Remote App



X80 Remote



Google



Duo



Assistant



Play Store



Phone



Messages



Chrome



Camera

Select device you want to connect to



Camera

SN: X8115EAA



Camera 1

SN: X82V6004

[< Back](#)



Camera 1
SN: X82V6004
Registered



100%

Text 1: Camera 1

Text 2: [Open Preview To Trigger Receive Pics Directly](#)

Camera preview: [Open Preview](#)

Firmware: 0.0.105 [More...](#)

Pics on Camera: 0 [Toggles Info](#)

File Transfer: Idle [Reroute the device](#)

Route: Base [Reroute...](#)

Route to Base: OK [Check Signal and battery status](#)

Signal:  8 of 8, -40dBm [Check](#)

[Now Click Open Preview](#)

< Back

Camera Preview

Trigger

Click To Go Back

Click To Trigger Camera

Camera Preview Mode Allows Users to
Trigger Camera and Receive Pics Directly

BuckEye Cam
Wireless Systems

< Back

Camera Preview

Trigger

Once Camera has been triggered pictures will show up on the Preview Screen

Camera can be trigger by PIR or Manually



These pictures will NOT be transmitted to the base
They are just to test your camera aim and triggering

Select Device To Reroute



Camera

SN: X8115EAA



Camera 1

SN: X82V6004

[< Back](#)



Camera 1

SN: X82V6004

Registered



100%

Text 1: Camera 1

Text 2:

Camera preview:

[Open Preview](#)

Firmware: 0.0.105

[More...](#)

Pics on Camera: 0

File Transfer: Idle

[Click Reroute](#)

Route: Base

[Reroute...](#)

Route to Base: OK

Signal:  8 of 8, -40dBm

[Check](#)

< Back

Route To...

Device will search and display all
devices it can communicate to directly



< Back

Route To...


Search Again



Base

X80 PCBase

Current Route



Camera 2

Camera 2

Select

All devices it can communicate to will be listed here

In this example we will select to route to Camera 2

BuckEye Cam
Wireless Systems

[< Back](#)



Camera 1

SN: X82V6004

Registered



100%

Text 1: Camera 1

Text 2:

Camera preview:

[Open Preview](#)

Firmware: 0.0.105

[More...](#)

Pics on Camera: 0

File Transfer: Idle

Click Reroute to Route
back to Base

Notice it is now routed to Camera 2

Route: Camera 2

[Reroute...](#)

Route to Base: Pinging...

Signal:  8 of 8, -49dBm

[Check](#)

< Back

Route To...

Search Again



Base

X80 PCBase

Click Select to route back to Base

Select



Camera 2

Camera 2

Current
Route

BuckEye Cam
Wireless Systems

[< Back](#)



Camera 1

SN: X82V6004

Registered



100%

Text 1: Camera 1

Text 2:

Camera preview:

[Open Preview](#)

Firmware: 0.0.105

[More...](#)

Pics on Camera: 0

File Transfer: Idle

Now Camera 1 is routed back to Base

Route: Base

[Reroute...](#)

Route to Base: OK

Signal:  8 of 8, -49dBm

[Check](#)